

LC250 (Prado) Rear Cubby Mesh Net Installation Manual



Installation Guide

IM Number :

Car Type : LC250 (Prado)

Fitment Time : 30 Minutes

Product Functionality

To be used as an additional compartment area on the rear side.

Quick Process Guide

1. Remove the floor trims to access the reference area of the "Hole Template (Center)". Then, attach and lay out its template.
2. Attach and lay out the side templates (LEFT and RIGHT) as well.
3. Once all the template is laid out, mark the specific areas shown on the templates using a center puncher or marker.
4. Using an angle drill, start drilling the marked areas with a 9mm diameter drill bit.
5. Once all the marked areas have been drilled, install the clips on both sides and the bottom area.
6. After that, install the mesh net. Once done, return all the floor trims to their original position.

Before beginning the installation

- Please read this entire installation guide before beginning the installation. The installation of this accessory requires removal of some vehicle panels and trims, better to check vehicle's workshop manual for instructions.

After the installation

- Test the mesh frame to make sure it is properly installed.

Tools Required

- Angle Drill and 9mm Dia Drill Bit
- Masking Tape
- Center Puncher/Marker

What is included

- Mesh net with frame (1 Set)
- Bottom and side clip (4)
- Drill Hole Template (3)
- Installation Manual (1)



LC250 (Prado) Rear Cubby Mesh Net Installation Manual

Installation Guide

Step 1



Detach the clips securing the floor trim on both sides.

Step 2



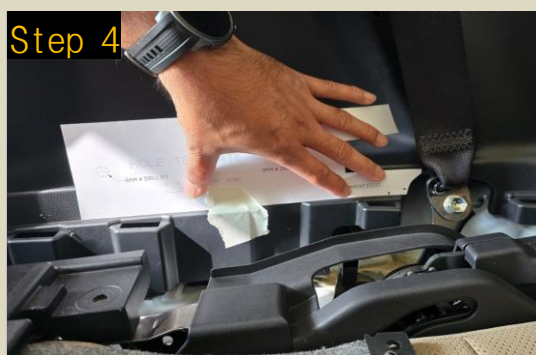
Take out the floor trim.

Step 3



After removing the floor trim, you can detach the side panel to reach the area for the center hole template.

Step 4



Position the center hole template using the provided reference points.

Step 5



The center hole template should now be correctly placed.

Step 6

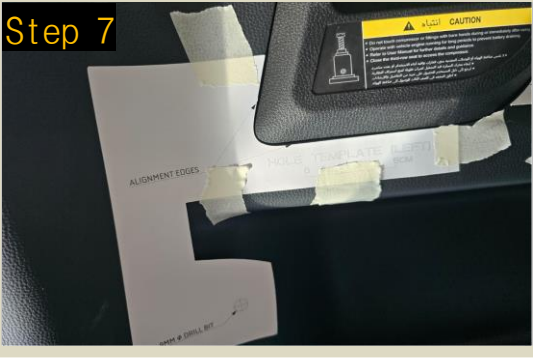


Position the right hole template as shown.

LC250 (Prado) Rear Cubby Mesh Net Installation Manual

Installation Guide

Step 7



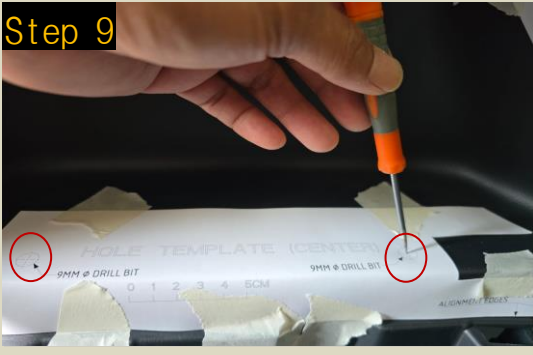
Position the left hole template as indicated.

Step 8



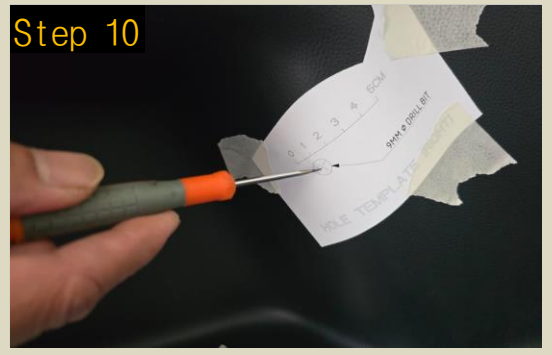
With all templates in place, this is the expected look. (Refer to template position based on the above image)

Step 9



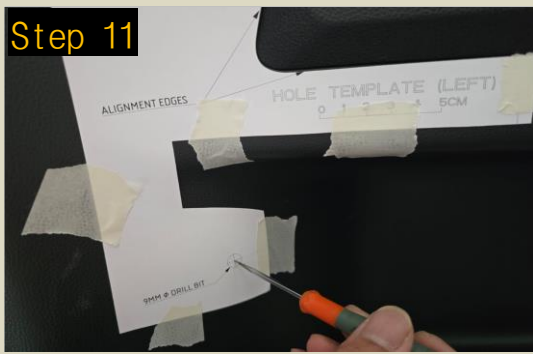
Use a center punch to mark where you'll be drilling on the center hole template.

Step 10



Repeat the marking process with a center punch for the right hole template, indicating the drilling spot.

Step 11



Mark the left side as shown and once all areas are marked, begin drilling using an angle drill.

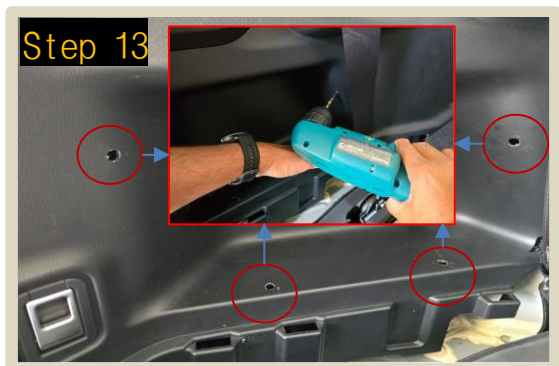
Step 12



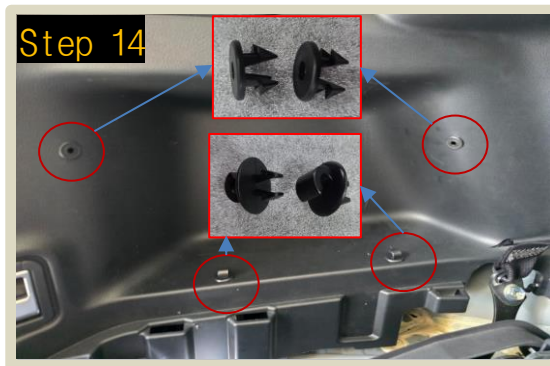
Ready the 9mm drill bit, marking it 5mm from the tip to prevent drilling into any metal or components behind the side trim.

LC250 (Prado) Rear Cubby Mesh Net Installation Manual

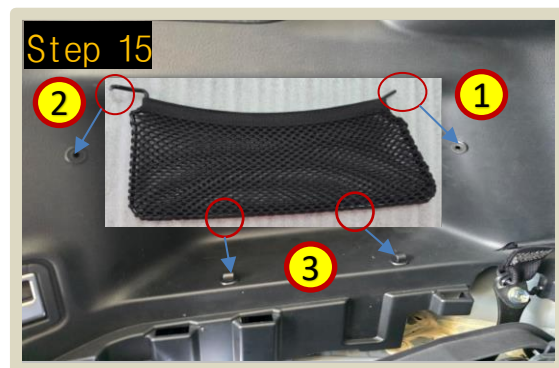
Installation Guide



Drill holes in the locations shown, using an angle drill with a 9mm drill bit..



Insert and push the provided clips into the drilled holes.



Install the cubby mesh net, starting with the anchor point labeled "1," then "2," and finally "3."



This is how the installed mesh should look once completed



Return all side and floor trims to their original positions. Installation is complete.